



FARBSTEIN FASHION

13

Für alle Modelle unserer Kollektion sind die Farbsteine, die Legierung (14 kt oder 18 kt) sowie Gelb-, Rot- oder Weißgold frei wählbar.



- 1 | **1DC35W** Ring WG, 1 Topas 0,25 ct, H:3,9 mm, B:4,0 mm 18 kt **479,-**
- 2 | **1DD21G** Ring GG, 1 Amethyst 0,25 ct grün, H:3,9 mm, B:4,0 mm 18 kt **479,-**
- 3 | **1DB70R** Ring RG, 1 Morganit 0,20 ct, H:3,9 mm, B:4,0 mm 18 kt **549,-**
- 4 | **1DC34W** Ring WG, 1 Topas 0,30 ct London blue, H:3,9 mm, B:4,0 mm 18 kt **499,-**
- 5 | **1DD22G** Ring GG, 1 Citrin 0,25 ct, H:3,9 mm, B:4,0 mm 18 kt **479,-**



- 6 | **1DB83R** Ring RG, 2 Brill. 0,03 ct, TW-si, 1 Morganit 0,75 ct, H:9,3 mm, B:5,7 mm 18 kt **879,-**
- 7 | **1DB82R** Ring RG, 2 Brill. 0,03 ct, TW-si, 1 Amethyst 0,75 ct grün, H:9,3 mm, B:5,7 mm 18 kt **699,-**
- 8 | **1DC60W** Ring WG, 2 Brill. 0,03 ct, TW-si, 1 Topas 0,75 ct, H:9,3 mm, B:5,7 mm 18 kt **729,-**
- 9 | **1DC61W** Ring WG, 2 Brill. 0,03 ct, TW-si, 1 Topas 1,00 ct London blue, H:9,3 mm, B:5,7 mm 18 kt **699,-**



- 10 | **1DB84R** Ring RG, 2 Brill. 0,04 ct, TW-si, 1 Morganit 1,00 ct, H:10,6 mm, B:8,1 mm 18 kt **1.129,-**
- 11 | **1DC62W** Ring WG, 2 Brill. 0,04 ct, TW-si, 1 Topas 1,50 ct, H:10,6 mm, B:8,1 mm 18 kt **929,-**
- 12 | **1DD40G** Ring GG, 2 Brill. 0,04 ct, TW-si, 1 Amethyst 1,20 ct grün, H:10,6 mm, B:8,1 mm 18 kt **879,-**



18 kt **949,-**
 18 kt **1.199,-**
 18 kt **979,-**



18 kt **729,-**
 18 kt **999,-**
 18 kt **749,-**



18 kt **699,-**
 18 kt **949,-**
 18 kt **749,-**



- 1 | **1DB77R** Ring RG, 4 Bag. 0,04 ct, TW-si, 1 Morganit 0,40 ct, H:12,1 mm, B:4,9 mm 18 kt **729,-**
 2 | **4K342R** Collier RG, 2 Bag. 0,02 ct, TW-si, 1 Morganit 0,40 ct, H:8,9 mm, B:5,0 mm, L:45,0 cm, S:3,9 mm 18 kt **979,-**
 3 | **2P182R** Ohrstecker RG, 4 Bag. 0,04 ct, TW-si, 2 Morganite 0,40 ct, H:6,7 mm, B:4,0 mm, S:2,9 mm 18 kt **649,-**



- 4 | **1DD32G** Ring GG, 4 Bag. 0,04 ct, TW-si, 1 Citrin 0,45 ct, H:12,1 mm, B:4,9 mm 18 kt **649,-**
 5 | **4K416G** Collier GG, 2 Bag. 0,02 ct, TW-si, 1 Citrin 0,45 ct, H:8,9 mm, B:5,0 mm, L:45,0 cm, S:3,9 mm 18 kt **879,-**
 6 | **2P216G** Ohrstecker GG, 4 Bag. 0,04 ct, TW-si, 2 Citrine 0,45 ct, H:6,7 mm, B:4,0 mm, S:2,9 mm 18 kt **599,-**



- 7 | **1DC52W** Ring WG, 4 Bag. 0,04 ct, TW-si, 1 Topas 0,60 ct London blue, H:12,1 mm, B:4,9 mm 18 kt **679,-**
 8 | **4K381W** Collier WG, 2 Bag. 0,02 ct, TW-si, 1 Topas 0,60 ct London blue, H:8,9 mm, B:5,0 mm, L:45,0 cm, S:3,9 mm 18 kt **899,-**
 9 | **2P226W** Ohrstecker WG, 4 Bag. 0,04 ct, TW-si, 2 Topase 0,60 ct London blue, H:6,7 mm, B:4,0 mm, S:2,9 mm 18 kt **629,-**



- 1 | **2N876R** Ohrschmuck RG, 2 Amethyste 3,50 ct, 8 Amethyste 0,90 ct, H:20,0 mm, B:8,0 mm, S:5,0 mm 18 kt **1.199,-**
- 2 | **3F841R** Anhänger RG, 1 Amethyst 2,50 ct, 3 Amethyste 0,50 ct, H:20,5 mm, B:9,3 mm, S:6,8 mm 18 kt **579,-**
- 3 | **1CE09R** Ring RG, 1 Amethyst 2,50 ct, 6 Amethyste 0,60 ct, Ø:9,2 mm 18 kt **999,-**
- 4 | **K000662** Ankerkette RG, L:42,0 cm 18 kt **469,-**



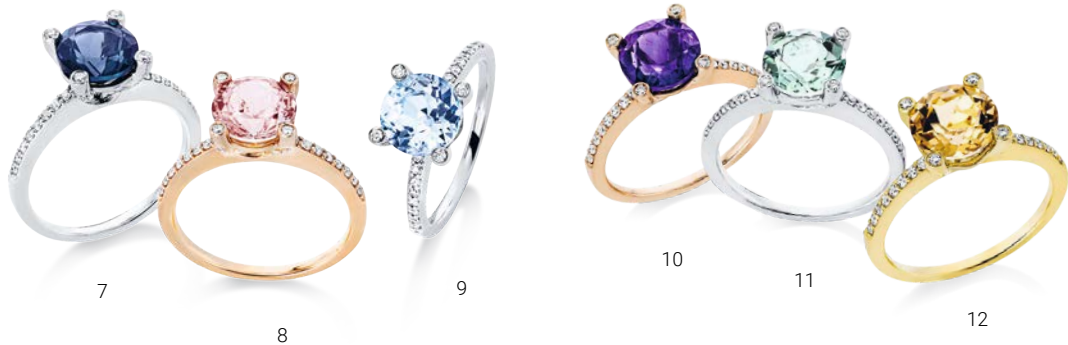
- 5 | **2N888R** Ohrschmuck RG, 2 Morganite 4,00 ct, 8 Morganite 0,90 ct, H:20,0 mm, B:8,0 mm, S:5,0 mm 18 kt **2.829,-**
- 6 | **3F847R** Anhänger RG, 1 Morganit 2,90 ct, 3 Morganite 0,50 ct, H:20,5 mm, B:9,3 mm, S:6,8 mm 18 kt **1.849,-**
- 7 | **1CE18R** Ring RG, 1 Morganit 2,90 ct, 6 Morganite 0,60 ct, Ø:9,2 mm 18 kt **2.329,-**
- 8 | **K000662** Ankerkette RG, L:42,0 cm 18 kt **469,-**



- 9 | **2N881R** Ohrschmuck RG, 2 Amethyste 3,90 ct grün, 8 Amethyste 0,90 ct grün, H:20,0 mm, B:8,0 mm, S:5,0 mm 18 kt **1.229,-**
- 10 | **3F845R** Anhänger RG, 1 Amethyst 2,90 ct grün, 3 Amethyste 0,50 ct grün, H:20,5 mm, B:9,3 mm, S:6,8 mm 18 kt **599,-**
- 11 | **1CE17R** Ring RG, 1 Amethyst 2,90 ct grün, 6 Amethyste 0,60 ct grün, Ø:9,2 mm 18 kt **1.049,-**
- 12 | **K000662** Ankerkette RG, L:42,0 cm 18 kt **469,-**



- | | | | | |
|---|---------------|--|-------|----------------|
| 1 | 1CO31W | Ring WG, 44 Brill. 0,15 ct, TW-si, 1 Topas 1,35 ct London blue, Ø:7,0 mm | 18 kt | 1.329,- |
| 2 | 1CF15G | Ring GG, 44 Brill. 0,15 ct, TW-si, 1 Citrin 1,30 ct, Ø:7,0 mm | 18 kt | 1.299,- |
| 3 | 1CF16W | Ring WG, 44 Brill. 0,15 ct, TW-si, 1 Topas 1,60 ct sky blue, Ø:7,0 mm | 18 kt | 1.249,- |
| 4 | 1CI09R | Ring RG, 44 Brill. 0,15 ct, TW-si, 1 Amethyst 1,25 ct, Ø:7,0 mm | 18 kt | 1.299,- |
| 5 | 1CI08W | Ring WG, 44 Brill. 0,15 ct, TW-si, 1 Amethyst 1,35 ct grün, Ø:7,0 mm | 18 kt | 1.249,- |
| 6 | 1CF22R | Ring RG, 44 Brill. 0,15 ct, TW-si, 1 Morganit 1,15 ct, Ø:7,0 mm | 18 kt | 1.629,- |



- | | | | | |
|----|---------------|--|-------|----------------|
| 7 | 1CF20W | Ring WG, 4 Brill. 0,03 ct, 32 Brill. 0,20 ct, TW-si, 1 Topas 2,35 ct London blue, Ø:8,4 mm | 18 kt | 1.829,- |
| 8 | 1CJ22R | Ring RG, 4 Brill. 0,03 ct, 32 Brill. 0,20 ct, TW-si, 1 Morganit 1,80 ct, Ø:8,4 mm | 18 kt | 2.479,- |
| 9 | 1CF24W | Ring WG, 4 Brill. 0,03 ct, 32 Brill. 0,20 ct, TW-si, 1 Topas 2,60 ct sky blue, Ø:8,4 mm | 18 kt | 1.729,- |
| 10 | 1CF21R | Ring RG, 4 Brill. 0,03 ct, 32 Brill. 0,20 ct, TW-si, 1 Amethyst 1,95 ct, Ø:8,4 mm | 18 kt | 1.749,- |
| 11 | 1CJ21W | Ring WG, 4 Brill. 0,03 ct, 32 Brill. 0,20 ct, TW-si, 1 Amethyst 1,80 ct grün, Ø:8,4 mm | 18 kt | 1.679,- |
| 12 | 1CF19G | Ring GG, 4 Brill. 0,03 ct, 32 Brill. 0,20 ct, TW-si, 1 Citrin 1,75 ct, Ø:8,4 mm | 18 kt | 1.729,- |



- 1 | **2P205R** Ohrstecker RG, 32 Brill. 0,10 ct, TW-si, 2 Morganite 0,40 ct, S:3,0 mm, Ø:6,6 mm 18 kt **999,-**
 2 | **4K332R** Collier RG, 16 Brill. 0,10 ct, TW-si, 1 Morganit 0,40 ct, H:9,5 mm, B:7,8 mm, L:45,0 cm, S:3,6 mm 18 kt **1.249,-**
 3 | **1DC01R** Ring RG, 18 Brill. 0,10 ct, TW-si, 1 Morganit 0,75 ct, Ø:8,8 mm 18 kt **1.199,-**



- 4 | **2P273G** Ohrstecker GG, 32 Brill. 0,10 ct, TW-si, 2 Citrine 0,45 ct, S:3,0 mm, Ø:6,6 mm 18 kt **929,-**
 5 | **4K403G** Collier GG, 16 Brill. 0,10 ct, TW-si, 1 Citrin 0,45 ct, H:9,5 mm, B:7,8 mm, L:45,0 cm, S:3,6 mm 18 kt **1.179,-**
 6 | **1DD62G** Ring GG, 18 Brill. 0,10 ct, TW-si, 1 Citrin 0,80 ct, Ø:8,8 mm 18 kt **1.079,-**



- 7 | **2P246W** Ohrstecker WG, 32 Brill. 0,10 ct, TW-si, 2 Topase 0,60 ct London blue, S:3,0 mm, Ø:6,6 mm 18 kt **949,-**
 8 | **4K358W** Collier WG, 16 Brill. 0,10 ct, TW-si, 1 Topas 0,60 ct London blue, H:9,5 mm, B:7,8 mm, L:45,0 cm, S:3,6 mm 18 kt **1.179,-**
 9 | **1DC93W** Ring WG, 18 Brill. 0,10 ct, TW-si, 1 Topas 1,00 ct London blue, Ø:8,8 mm 18 kt **1.049,-**



- 1 | **1CR01R** Ring RG, 14 Brill. 0,10 ct, TW-si, 1 Morganit 1,90 ct, Ø:7,4 mm 18 kt **1.729,-**
 2 | **3G293R** Anhänger RG, 5 Brill. 0,05 ct, TW-si, 1 Morganit 1,90 ct, H:16,5 mm, B:8,9 mm, S:5,3 mm 18 kt **1.129,-**
 3 | **2O618R** Ohrschmuck RG, 18 Brill. 0,10 ct, TW-si, 2 Morganite 3,80 ct, H:22,3 mm, B:8,9 mm, S:5,3 mm 18 kt **2.249,-**
 4 | **K000659** Zopfketten RG, L:42,0 cm 18 kt **649,-**



- 5 | **1CQ97G** Ring GG, 14 Brill. 0,10 ct, TW-si, 1 Citrin 1,90 ct, Ø:7,4 mm 18 kt **1.149,-**
 6 | **3G290G** Anhänger GG, 5 Brill. 0,05 ct, TW-si, 1 Citrin 1,90 ct, H:16,5 mm, B:8,9 mm, S:5,3 mm 18 kt **499,-**
 7 | **2O615G** Ohrschmuck GG, 18 Brill. 0,10 ct, TW-si, 2 Citrine 3,80 ct, H:22,3 mm, B:8,9 mm, S:5,3 mm 18 kt **1.549,-**
 8 | **K000658** Zopfketten GG, L:42,0 cm 18 kt **649,-**



- 9 | **1CQ99R** Ring RG, 14 Brill. 0,10 ct, TW-si, 1 Amethyst 1,90 ct grün, Ø:7,4 mm 18 kt **1.149,-**
 10 | **3G292R** Anhänger RG, 5 Brill. 0,05 ct, TW-si, 1 Amethyst 1,90 ct grün, H:16,5 mm, B:8,9 mm, S:5,3 mm 18 kt **499,-**
 11 | **2O617R** Ohrschmuck RG, 18 Brill. 0,10 ct, TW-si, 2 Amethyste 3,80 ct grün, H:22,3 mm, B:8,9 mm, S:5,3 mm 18 kt **1.549,-**
 12 | **K000659** Zopfketten RG, L:42,0 cm 18 kt **649,-**



- 1 | **20591W** Ohrstecker WG, 48 Brill. 0,25 ct, TW-si, 2 Topase 4,10 ct sky blue, S:5,3 mm, Ø:10,5 mm 18 kt **1.999,-**
 2 | **4K073W** Collier WG, 26 Brill. 0,15 ct, TW-si, 1 Topas 3,10 ct sky blue, L:41,0 cm, S:6,1 mm, Ø:11,3 mm 18 kt **1.579,-**
 3 | **1CQ62W** Ring WG, 26 Brill. 0,15 ct, TW-si, 1 Topas 3,10 ct sky blue, Ø:11,3 mm 18 kt **1.549,-**



- 4 | **2N843G** Ohrstecker GG, 44 Brill. 0,20 ct, TW-si, 2 Peridot 3,00 ct, S:5,3 mm, Ø:9,3 mm 18 kt **1.679,-**
 5 | **4J532G** Collier GG, 22 Brill. 0,10 ct, TW-si, 1 Peridot 1,60 ct, L:41,0 cm, S:6,1 mm, Ø:9,3 mm 18 kt **1.379,-**
 6 | **1CD78G** Ring GG, 22 Brill. 0,10 ct, TW-si, 1 Peridot 1,60 ct, Ø:9,3 mm 18 kt **1.179,-**



- 7 | **20592R** Ohrstecker RG, 48 Brill. 0,25 ct, TW-si, 2 Topase 4,30 ct London blue, S:5,3 mm, Ø:10,5 mm 18 kt **1.599,-**
 8 | **4K074R** Collier RG, 26 Brill. 0,15 ct, TW-si, 1 Topas 3,00 ct London blue, L:41,0 cm, S:6,1 mm, Ø:11,3 mm 18 kt **1.499,-**
 9 | **1CQ63R** Ring RG, 26 Brill. 0,15 ct, TW-si, 1 Topas 3,00 ct London blue, Ø:11,3 mm 18 kt **1.479,-**



- | | | |
|--|-------|----------------|
| 1 4K335R Collier RG, 7 Morganite 2,80 ct, H:9,4 mm, B:5,3 mm, L:42,0 cm, S:2,9 mm | 18 kt | 1.899,- |
| 2 4K366W Collier WG, 7 Topase 4,05 ct sky blue, H:9,4 mm, B:5,3 mm, L:42,0 cm, S:2,9 mm | 18 kt | 1.429,- |
| 3 4K407G Collier GG, 7 Peridot 3,65 ct, H:9,4 mm, B:5,3 mm, L:42,0 cm, S:2,9 mm | 18 kt | 1.549,- |



- | | | |
|---|-------|--------------|
| 4 1DD01W Ring WG, 1 Topas 1,60 ct London blue, H:8,4 mm, B:6,6 mm | 18 kt | 699,- |
| 5 4K397W Collier WG, 1 Topas 1,60 ct London blue, H:14,2 mm, B:6,3 mm, L:45,0 cm, S:4,0 mm | 18 kt | 999,- |
| 6 2P253W Ohrstecker WG, 2 Topase 1,80 ct London blue, H:7,3 mm, B:5,8 mm, S:4,0 mm | 18 kt | 729,- |



- 1 | **2P186R** Ohrstecker RG, 2 Morganite 0,80 ct, H:6,0 mm, B:4,2 mm, S:3,8 mm 18 kt **699,-**
 2 | **4K347R** Collier RG, 1 Morganit 0,65 ct, H:13,3 mm, B:5,1 mm, L:45,0 cm, S:3,7 mm 18 kt **1.049,-**
 3 | **1DB93R** Ring RG, 1 Morganit 0,65 ct, H:5,0 mm, B:7,0 mm 18 kt **729,-**



- 4 | **2P264G** Ohrstecker GG, 2 Amethyste 0,80 ct grün, H:6,0 mm, B:4,2 mm, S:3,8 mm 18 kt **549,-**
 5 | **4K422G** Collier GG, 1 Amethyst 0,65 ct grün, H:13,3 mm, B:5,1 mm, L:45,0 cm, S:3,7 mm 18 kt **879,-**
 6 | **1DD54G** Ring GG, 1 Amethyst 0,65 ct grün, H:5,0 mm, B:7,0 mm 18 kt **599,-**



- 7 | **2P265G** Ohrstecker GG, 2 Citrine 0,80 ct, H:6,0 mm, B:4,2 mm, S:3,8 mm 18 kt **579,-**
 8 | **4K423G** Collier GG, 1 Citrin 0,65 ct, H:13,3 mm, B:5,1 mm, L:45,0 cm, S:3,7 mm 18 kt **929,-**
 9 | **1DD55G** Ring GG, 1 Citrin 0,65 ct, H:5,0 mm, B:7,0 mm 18 kt **599,-**



- | | |
|---|--------------------|
| 1 1CF09G Ring GG, 2 Brill. 0,04 ct, TW-si, 1 Citrin 1,20 ct, H:9,2 mm, B:8,0 mm | 18 kt 749,- |
| 2 1CF12R Ring RG, 2 Brill. 0,04 ct, TW-si, 1 Amethyst 1,55 ct, H:9,2 mm, B:8,0 mm | 18 kt 729,- |
| 3 1CF10W Ring WG, 2 Brill. 0,04 ct, TW-si, 1 Topas 1,55 ct London blue, H:9,2 mm, B:8,0 mm | 18 kt 799,- |
| 4 1CF11W Ring WG, 2 Brill. 0,04 ct, TW-si, 1 Amethyst 1,20 ct grün, H:9,2 mm, B:8,0 mm | 18 kt 729,- |
| 5 1CF75W Ring WG, 2 Brill. 0,04 ct, TW-si, 1 Topas 1,55 ct sky blue, H:9,2 mm, B:8,0 mm | 18 kt 749,- |
| 6 1CF13R Ring RG, 2 Brill. 0,04 ct, TW-si, 1 Morganit 1,00 ct, H:9,2 mm, B:8,0 mm | 18 kt 999,- |



- | | |
|--|----------------------|
| 7 1CF03G Ring GG, 2 Brill. 0,04 ct, TW-si, 1 Citrin 2,60 ct, H:8,4 mm, B:10,3 mm | 18 kt 999,- |
| 8 1CF06R Ring RG, 2 Brill. 0,04 ct, TW-si, 1 Amethyst 2,55 ct, H:8,4 mm, B:10,3 mm | 18 kt 949,- |
| 9 1CF04W Ring WG, 2 Brill. 0,04 ct, TW-si, 1 Topas 3,30 ct London blue, H:8,4 mm, B:10,3 mm | 18 kt 1.099,- |
| 10 1CF05W Ring WG, 2 Brill. 0,04 ct, TW-si, 1 Amethyst 2,55 ct grün, H:8,4 mm, B:10,3 mm | 18 kt 929,- |
| 11 1CF07W Ring WG, 2 Brill. 0,04 ct, TW-si, 1 Topas 3,00 ct sky blue, H:8,4 mm, B:10,3 mm | 18 kt 949,- |
| 12 1CF08R Ring RG, 2 Brill. 0,04 ct, TW-si, 1 Morganit 2,25 ct, H:8,4 mm, B:10,3 mm | 18 kt 2.079,- |



- 1 | **2P183R** Ohrstecker RG, 2 Brill. 0,04 ct, TW-si, 2 Morganite 2,20 ct, H:11,0 mm, B:6,0 mm, S:5,0 mm 18 kt **1.479,-**
- 2 | **4K343R** Collier RG, 1 Brill. 0,02 ct, TW-si, 1 Morganit 1,70 ct, H:12,6 mm, B:7,0 mm, L:45,0 cm, S:5,6 mm 18 kt **1.599,-**
- 3 | **1DB88R** Ring RG, 2 Brill. 0,04 ct, TW-si, 1 Morganit 1,70 ct, H:11,3 mm, B:10,3 mm 18 kt **1.429,-**



- 4 | **2P260G** Ohrstecker GG, 2 Brill. 0,04 ct, TW-si, 2 Amethyste 2,35 ct grün, H:11,0 mm, B:6,0 mm, S:5,0 mm 18 kt **949,-**
- 5 | **4K417G** Collier GG, 1 Brill. 0,02 ct, TW-si, 1 Amethyst 1,75 ct grün, H:12,6 mm, B:7,0 mm, L:45,0 cm, S:5,6 mm 18 kt **1.079,-**
- 6 | **1DD48G** Ring GG, 2 Brill. 0,04 ct, TW-si, 1 Amethyst 1,75 ct grün, H:11,3 mm, B:10,3 mm 18 kt **929,-**



- 7 | **2P259G** Ohrstecker GG, 2 Brill. 0,04 ct, TW-si, 2 Citrine 2,30 ct, H:11,0 mm, B:6,0 mm, S:5,0 mm 18 kt **1.099,-**
- 8 | **4K418G** Collier GG, 1 Brill. 0,02 ct, TW-si, 1 Citrin 1,55 ct, H:12,6 mm, B:7,0 mm, L:45,0 cm, S:5,6 mm 18 kt **1.249,-**
- 9 | **1DD49G** Ring GG, 2 Brill. 0,04 ct, TW-si, 1 Citrin 1,55 ct, H:11,3 mm, B:10,3 mm 18 kt **979,-**



- 1 | **1CB83R** Ring RG, 2 Brill. 0,07 ct, TW-si, 1 Morganit 1,15 ct, H:5,6 mm, B:8,0 mm 18 kt **1.249,-**
- 2 | **1CB76R** Ring RG, 18 Brill. 0,08 ct, TW-si, 1 Morganit 1,70 ct, H:6,7 mm, B:8,7 mm 18 kt **1.649,-**
- 3 | **1CB84R** Ring RG, 2 Brill. 0,07 ct, TW-si, 1 Amethyst 1,05 ct, H:5,6 mm, B:8,0 mm 18 kt **999,-**
- 4 | **1CB77R** Ring RG, 18 Brill. 0,08 ct, TW-si, 1 Amethyst 1,35 ct, H:6,7 mm, B:8,7 mm 18 kt **1.179,-**



- 5 | **1CB89G** Ring GG, 2 Brill. 0,07 ct, TW-si, 1 Peridot 1,30 ct, H:5,6 mm, B:8,0 mm 18 kt **1.049,-**
- 6 | **1CB82G** Ring GG, 18 Brill. 0,08 ct, TW-si, 1 Peridot 2,15 ct, H:6,7 mm, B:8,7 mm 18 kt **1.249,-**
- 7 | **1CB88G** Ring GG, 2 Brill. 0,07 ct, TW-si, 1 Citrin 1,25 ct, H:5,6 mm, B:8,0 mm 18 kt **999,-**
- 8 | **1CB81G** Ring GG, 18 Brill. 0,08 ct, TW-si, 1 Citrin 1,80 ct, H:6,7 mm, B:8,7 mm 18 kt **1.179,-**



- 9 | **1CB87W** Ring WG, 2 Brill. 0,07 ct, TW-si, 1 Topas 1,35 ct sky blue, H:5,6 mm, B:8,0 mm 18 kt **999,-**
- 10 | **1CB80W** Ring WG, 18 Brill. 0,08 ct, TW-si, 1 Topas 1,95 ct sky blue, H:6,7 mm, B:8,7 mm 18 kt **1.149,-**
- 11 | **1CB86W** Ring WG, 2 Brill. 0,07 ct, TW-si, 1 Topas 1,40 ct London blue, H:5,6 mm, B:8,0 mm 18 kt **999,-**
- 12 | **1CB79W** Ring WG, 18 Brill. 0,08 ct, TW-si, 1 Topas 2,20 ct London blue, H:6,7 mm, B:8,7 mm 18 kt **1.179,-**



- 1 | **2N689R** Ohrschmuck RG, 22 Brill. 0,15 ct, TW-si, 2 Morganite 2,20 ct, H:24,0 mm, B:5,9 mm, S:4,4 mm 18 kt **1.899,-**
- 2 | **4J440R** Collier RG, 5 Brill. 0,05 ct, TW-si, 1 Morganit 1,65 ct, H:16,8 mm, B:7,0 mm, L:45,0 cm, S:5,1 mm 18 kt **1.699,-**
- 3 | **1CC04R** Ring RG, 14 Brill. 0,15 ct, TW-si, 1 Morganit 1,65 ct, H:6,9 mm, B:9,0 mm 18 kt **1.729,-**



- 4 | **2N694G** Ohrschmuck GG, 22 Brill. 0,15 ct, TW-si, 2 Citrine 2,21 ct, H:24,0 mm, B:5,9 mm, S:4,4 mm 18 kt **1.429,-**
- 5 | **4J438G** Collier GG, 5 Brill. 0,05 ct, TW-si, 1 Citrin 1,70 ct, H:16,8 mm, B:7,0 mm, L:45,0 cm, S:5,1 mm 18 kt **1.199,-**
- 6 | **1CB96G** Ring GG, 14 Brill. 0,15 ct, TW-si, 1 Citrin 1,70 ct, H:6,9 mm, B:9,0 mm 18 kt **1.229,-**



- 7 | **2N695G** Ohrschmuck GG, 22 Brill. 0,15 ct, TW-si, 2 Peridot 2,59 ct, H:24,0 mm, B:5,9 mm, S:4,4 mm 18 kt **1.449,-**
- 8 | **4J439G** Collier GG, 5 Brill. 0,05 ct, TW-si, 1 Peridot 1,90 ct, H:16,8 mm, B:7,0 mm, L:45,0 cm, S:5,1 mm 18 kt **1.249,-**
- 9 | **1CC02G** Ring GG, 14 Brill. 0,15 ct, TW-si, 1 Peridot 1,90 ct, H:6,9 mm, B:9,0 mm 18 kt **1.299,-**



1



2



3

- 1 | **1DB64R** Ring RG, 12 Brill. 0,25 ct, TW-si, 1 Morganit 0,40 ct, H:7,5 mm, B:9,5 mm 18 kt **1.549,-**
 2 | **4K337R** Collier RG, 12 Brill. 0,25 ct, TW-si, 1 Morganit 0,40 ct, H:15,0 mm, B:7,4 mm, L:45,0 cm, S:4,6 mm 18 kt **1.649,-**
 3 | **2P175R** Ohrstecker RG, 24 Brill. 0,25 ct, TW-si, 2 Morganite 0,40 ct, H:7,7 mm, B:5,8 mm, S:2,4 mm 18 kt **1.249,-**



4



5



6

- 4 | **1DD11G** Ring GG, 12 Brill. 0,25 ct, TW-si, 1 Citrin 0,45 ct, H:7,5 mm, B:9,5 mm 18 kt **1.499,-**
 5 | **4K410G** Collier GG, 12 Brill. 0,25 ct, TW-si, 1 Citrin 0,45 ct, H:15,0 mm, B:7,4 mm, L:45,0 cm, S:4,6 mm 18 kt **1.599,-**
 6 | **2P209G** Ohrstecker GG, 24 Brill. 0,25 ct, TW-si, 2 Citrine 0,45 ct, H:7,7 mm, B:5,8 mm, S:2,4 mm 18 kt **1.229,-**



7



8



9

- 7 | **1DC18W** Ring WG, 12 Brill. 0,25 ct, TW-si, 1 Topas 0,60 ct London blue, H:7,5 mm, B:9,5 mm 18 kt **1.479,-**
 8 | **4K375W** Collier WG, 12 Brill. 0,25 ct, TW-si, 1 Topas 0,60 ct London blue, H:15,0 mm, B:7,4 mm, L:45,0 cm, S:4,6 mm 18 kt **1.579,-**
 9 | **2P218W** Ohrstecker WG, 24 Brill. 0,25 ct, TW-si, 2 Topase 0,60 ct London blue, H:7,7 mm, B:5,8 mm, S:2,4 mm 18 kt **1.199,-**



- 1 | **2P177R** Ohrstecker RG, 32 Dia. 0,05 ct, TW-si, 2 Morganite 0,25 ct, H:5,9 mm, B:4,8 mm, S:3,1 mm 18 kt **649,-**
- 2 | **4K339R** Collier RG, 16 Dia. 0,04 ct, TW-si, 1 Morganit 0,20 ct, H:8,6 mm, B:4,8 mm, L:45,0 cm, S:3,2 mm 18 kt **899,-**
- 3 | **1DB68R** Ring RG, 30 Dia. 0,08 ct, TW-si, 1 Morganit 0,20 ct, H:6,8 mm, B:4,8 mm 18 kt **829,-**



- 4 | **2P214G** Ohrstecker GG, 32 Dia. 0,05 ct, TW-si, 2 Amethyste 0,25 ct grün, H:5,9 mm, B:4,8 mm, S:3,1 mm 18 kt **599,-**
- 5 | **4K414G** Collier GG, 16 Dia. 0,04 ct, TW-si, 1 Amethyst 0,20 ct grün, H:8,6 mm, B:4,8 mm, L:45,0 cm, S:3,2 mm 18 kt **849,-**
- 6 | **1DD20G** Ring GG, 30 Dia. 0,08 ct, TW-si, 1 Amethyst 0,20 ct grün, H:6,8 mm, B:4,8 mm 18 kt **749,-**



- 7 | **2P221W** Ohrstecker WG, 32 Dia. 0,05 ct, TW-si, 2 Topase 0,35 ct London blue, H:5,9 mm, B:4,8 mm, S:3,1 mm 18 kt **629,-**
- 8 | **4K377W** Collier WG, 16 Dia. 0,04 ct, TW-si, 1 Topas 0,30 ct London blue, H:8,6 mm, B:4,8 mm, L:45,0 cm, S:3,2 mm 18 kt **879,-**
- 9 | **1DC27W** Ring WG, 30 Dia. 0,08 ct, TW-si, 1 Topas 0,30 ct London blue, H:6,8 mm, B:4,8 mm 18 kt **799,-**



- 1 | **1Z355R** Ring RG, 10 Brill. 0,20 ct, TW-si, 1 Morganit 5,60 ct, H:10,0 mm, B:13,7 mm 18 kt **4.429,-**
 2 | **3F885R** Anhänger RG, 5 Brill. 0,10 ct, TW-si, 1 Morganit 5,60 ct, H:23,5 mm, B:10,0 mm, S:7,1 mm 18 kt **3.749,-**
 3 | **2N925R** Ohrschmuck RG, 14 Brill. 0,25 ct, TW-si, 2 Morganite 7,00 ct, H:23,5 mm, B:9,0 mm, S:6,0 mm 18 kt **4.929,-**
 4 | **K000662** Ankerkette RG, L:42,0 cm 18 kt **469,-**



- 5 | **1CE59R** Ring RG, 10 Brill. 0,20 ct, TW-si, 1 Amethyst 5,60 ct grün, H:10,0 mm, B:13,7 mm 18 kt **1.629,-**
 6 | **3F884R** Anhänger RG, 5 Brill. 0,10 ct, TW-si, 1 Amethyst 5,60 ct grün, H:24,5 mm, B:10,0 mm, S:6,8 mm 18 kt **929,-**
 7 | **2N924R** Ohrschmuck RG, 14 Brill. 0,25 ct, TW-si, 2 Amethyste 7,00 ct grün, H:23,5 mm, B:9,0 mm, S:6,0 mm 18 kt **1.999,-**
 8 | **K000662** Ankerkette RG, L:42,0 cm 18 kt **469,-**



- 9 | **1CE55R** Ring RG, 10 Brill. 0,20 ct, TW-si, 1 Topas 7,20 ct London blue, H:10,0 mm, B:13,7 mm 18 kt **1.749,-**
 10 | **3F880R** Anhänger RG, 5 Brill. 0,10 ct, TW-si, 1 Topas 7,20 ct London blue, H:23,3 mm, B:10,0 mm, S:6,5 mm 18 kt **1.079,-**
 11 | **2N920R** Ohrschmuck RG, 14 Brill. 0,25 ct, TW-si, 2 Topase 8,80 ct London blue, H:23,5 mm, B:9,0 mm, S:6,0 mm 18 kt **2.199,-**
 12 | **K000662** Ankerkette RG, L:42,0 cm 18 kt **469,-**



- 1 | **2N846R** Ohrschmuck RG, 72 Brill. 0,30 ct, TW-si, 2 Topase 8,90 ct London blue, H:26,8 mm, B:11,4 mm, S:5,3 mm 18 kt **2.879,-**
- 2 | **3F817R** Anhänger RG, 33 Brill. 0,15 ct, TW-si, 1 Topas 4,40 ct London blue, H:21,3 mm, B:11,4 mm, S:5,7 mm 18 kt **1.199,-**
- 3 | **1CD80R** Ring RG, 40 Brill. 0,25 ct, TW-si, 1 Topas 4,40 ct London blue, H:11,5 mm, B:13,1 mm 18 kt **1.999,-**
- 4 | **K000662** Ankerkette RG, L:42,0 cm 18 kt **469,-**



- 5 | **2N845W** Ohrschmuck WG, 72 Brill. 0,30 ct, TW-si, 2 Topase 8,90 ct sky blue, H:26,8 mm, B:11,4 mm, S:5,3 mm 18 kt **2.879,-**
- 6 | **3F816W** Anhänger WG, 33 Brill. 0,15 ct, TW-si, 1 Topas 4,40 ct sky blue, H:21,3 mm, B:11,4 mm, S:5,7 mm 18 kt **1.199,-**
- 7 | **1CD79W** Ring WG, 40 Brill. 0,25 ct, TW-si, 1 Topas 4,40 ct sky blue, H:11,5 mm, B:13,1 mm 18 kt **1.999,-**
- 8 | **K000660** Ankerkette WG, L:42,0 cm 18 kt **469,-**



- 9 | **2N850R** Ohrschmuck RG, 72 Brill. 0,30 ct, TW-si, 2 Amethyste 6,20 ct grün, H:26,8 mm, B:11,4 mm, S:5,3 mm 18 kt **2.679,-**
- 10 | **3F819R** Anhänger RG, 33 Brill. 0,15 ct, TW-si, 1 Amethyst 3,30 ct grün, H:21,3 mm, B:11,4 mm, S:5,7 mm 18 kt **1.129,-**
- 11 | **1CD82R** Ring RG, 40 Brill. 0,25 ct, TW-si, 1 Amethyst 3,30 ct grün, H:11,5 mm, B:13,1 mm 18 kt **1.899,-**
- 12 | **K000662** Ankerkette RG, L:42,0 cm 18 kt **469,-**



- 1 | **1DB67R** Ring RG, 34 Dia. 0,10 ct, TW-si, 1 Morganit 0,35 ct, H:6,1 mm, B:8,2 mm 18 kt **899,-**
 2 | **4K338R** Collier RG, 20 Dia. 0,05 ct, TW-si, 1 Morganit 0,35 ct, H:10,0 mm, B:6,0 mm, L:45,0 cm, S:3,0 mm 18 kt **999,-**
 3 | **2P176R** Ohrstecker RG, 40 Dia. 0,07 ct, TW-si, 2 Morganite 0,35 ct, H:7,1 mm, B:5,0 mm, S:2,1 mm 18 kt **729,-**



- 4 | **1DD17G** Ring GG, 34 Dia. 0,10 ct, TW-si, 1 Citrin 0,35 ct, H:6,1 mm, B:8,2 mm 18 kt **879,-**
 5 | **4K411G** Collier GG, 20 Dia. 0,05 ct, TW-si, 1 Citrin 0,35 ct, H:10,0 mm, B:6,0 mm, L:45,0 cm, S:3,0 mm 18 kt **929,-**
 6 | **2P210G** Ohrstecker GG, 40 Dia. 0,07 ct, TW-si, 2 Citrine 0,35 ct, H:7,1 mm, B:5,0 mm, S:2,1 mm 18 kt **629,-**



- 7 | **1DC26W** Ring WG, 34 Dia. 0,10 ct, TW-si, 1 Topas 0,45 ct London blue, H:6,1 mm, B:8,2 mm 18 kt **879,-**
 8 | **4K376W** Collier WG, 20 Dia. 0,05 ct, TW-si, 1 Topas 0,45 ct London blue, H:10,0 mm, B:6,0 mm, L:45,0 cm, S:3,0 mm 18 kt **929,-**
 9 | **2P220W** Ohrstecker WG, 40 Dia. 0,07 ct, TW-si, 2 Topase 0,45 ct London blue, H:7,1 mm, B:5,0 mm, S:2,1 mm 18 kt **679,-**



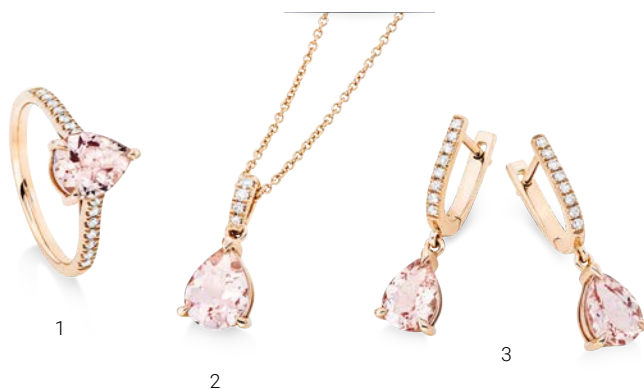
- 1 | **2P190R** Ohrstecker RG, 44 Brill. 0,12 ct, TW-si, 2 Morganite 0,70 ct, H:9,3 mm, B:6,9 mm, S:4,0 mm 18 kt **1.129,-**
- 2 | **4K331R** Collier RG, 20 Brill. 0,12 ct, TW-si, 1 Morganit 0,60 ct, H:11,6 mm, B:8,7 mm, L:45,0 cm, S:4,1 mm 18 kt **1.499,-**
- 3 | **1DB97R** Ring RG, 20 Brill. 0,12 ct, TW-si, 1 Morganit 0,60 ct, H:9,0 mm, B:11,5 mm 18 kt **1.399,-**



- 4 | **2P269G** Ohrstecker GG, 44 Brill. 0,12 ct, TW-si, 2 Citrine 0,70 ct, H:9,3 mm, B:6,9 mm, S:4,0 mm 18 kt **1.049,-**
- 5 | **4K401G** Collier GG, 20 Brill. 0,12 ct, TW-si, 1 Citrin 0,60 ct, H:11,6 mm, B:8,7 mm, L:45,0 cm, S:4,1 mm 18 kt **1.399,-**
- 6 | **1DD59G** Ring GG, 20 Brill. 0,12 ct, TW-si, 1 Citrin 0,60 ct, H:9,0 mm, B:11,5 mm 18 kt **1.379,-**



- 7 | **2P244W** Ohrstecker WG, 44 Brill. 0,12 ct, TW-si, 2 Topase 0,90 ct London blue, H:9,3 mm, B:6,9 mm, S:4,0 mm 18 kt **999,-**
- 8 | **4K356W** Collier WG, 20 Brill. 0,12 ct, TW-si, 1 Topas 0,85 ct London blue, H:11,6 mm, B:8,7 mm, L:45,0 cm, S:4,1 mm 18 kt **1.379,-**
- 9 | **1DC91W** Ring WG, 20 Brill. 0,12 ct, TW-si, 1 Topas 0,85 ct London blue, H:9,0 mm, B:11,5 mm 18 kt **1.349,-**



- 1 | **1CC08R** Ring RG, 14 Brill. 0,15 ct, TW-si, 1 Morganit 1,25 ct, H:7,1 mm, B:10,1 mm 18 kt **1.579,-**
- 2 | **4J377R** Collier RG, 4 Brill. 0,05 ct, TW-si, 1 Morganit 1,25 ct, H:16,9 mm, B:7,7 mm, L:45,0 cm, S:5,1 mm 18 kt **1.499,-**
- 3 | **2N696R** Ohrschmuck RG, 16 Brill. 0,10 ct, TW-si, 2 Morganite 1,90 ct, H:24,1 mm, B:6,7 mm, S:4,3 mm 18 kt **1.649,-**



- 4 | **1CC12G** Ring GG, 14 Brill. 0,15 ct, TW-si, 1 Citrin 1,65 ct, H:7,1 mm, B:10,1 mm 18 kt **1.179,-**
- 5 | **4J383G** Collier GG, 4 Brill. 0,05 ct, TW-si, 1 Citrin 1,65 ct, H:16,9 mm, B:7,7 mm, L:45,0 cm, S:5,1 mm 18 kt **1.129,-**
- 6 | **2N701G** Ohrschmuck GG, 16 Brill. 0,10 ct, TW-si, 2 Citrine 2,10 ct, H:24,1 mm, B:6,7 mm, S:4,3 mm 18 kt **1.179,-**



- 7 | **1CC13G** Ring GG, 14 Brill. 0,15 ct, TW-si, 1 Peridot 1,75 ct, H:7,1 mm, B:10,1 mm 18 kt **1.229,-**
- 8 | **4J384G** Collier GG, 4 Brill. 0,05 ct, TW-si, 1 Peridot 1,75 ct, H:16,9 mm, B:7,7 mm, L:45,0 cm, S:5,1 mm 18 kt **1.149,-**
- 9 | **2N702G** Ohrschmuck GG, 16 Brill. 0,10 ct, TW-si, 2 Peridot 2,00 ct, H:24,1 mm, B:6,7 mm, S:4,3 mm 18 kt **1.199,-**



- 1 | **20280R** Ohrschmuck RG, 14 Brill. 0,20 ct, TW-si, 2 Morganite 5,70 ct, H:23,6 mm, B:9,1 mm, S:5,9 mm 18 kt **4.179,-**
- 2 | **3G203R** Anhänger RG, 5 Brill. 0,10 ct, TW-si, 1 Morganit 4,50 ct, H:22,4 mm, B:9,5 mm, S:6,4 mm 18 kt **2.629,-**
- 3 | **1CK95R** Ring RG, 10 Brill. 0,20 ct, TW-si, 1 Morganit 4,50 ct, H:10,0 mm, B:12,5 mm 18 kt **3.479,-**
- 4 | **K000662** Ankerkette RG, L:42,0 cm 18 kt **469,-**



- 5 | **20279R** Ohrschmuck RG, 14 Brill. 0,20 ct, TW-si, 2 Amethyste 6,70 ct grün, H:23,6 mm, B:9,1 mm, S:5,9 mm 18 kt **1.849,-**
- 6 | **3G201R** Anhänger RG, 5 Brill. 0,10 ct, TW-si, 1 Amethyst 4,60 ct grün, H:22,4 mm, B:9,5 mm, S:6,4 mm 18 kt **879,-**
- 7 | **1CK94R** Ring RG, 10 Brill. 0,20 ct, TW-si, 1 Amethyst 4,60 ct grün, H:10,0 mm, B:12,5 mm 18 kt **1.649,-**
- 8 | **K000662** Ankerkette RG, L:42,0 cm 18 kt **469,-**



- 9 | **20277G** Ohrschmuck GG, 14 Brill. 0,20 ct, TW-si, 2 Citrine 6,20 ct, H:23,6 mm, B:9,1 mm, S:5,9 mm 18 kt **1.849,-**
- 10 | **3G199G** Anhänger GG, 5 Brill. 0,10 ct, TW-si, 1 Citrin 4,30 ct, H:22,4 mm, B:9,5 mm, S:6,4 mm 18 kt **879,-**
- 11 | **1CK92G** Ring GG, 10 Brill. 0,20 ct, TW-si, 1 Citrin 4,30 ct, H:10,0 mm, B:12,5 mm 18 kt **1.649,-**
- 12 | **K000661** Ankerkette GG, L:42,0 cm 18 kt **469,-**



- 1 | **1CQ81R** Ring RG, 12 Brill. 0,10 ct, TW-si, 1 Topas 3,10 ct London blue, H:8,8 mm, B:11,1 mm 18 kt **1.199,-**
- 2 | **3G280R** Anhänger RG, 6 Brill. 0,05 ct, TW-si, 1 Topas 3,10 ct London blue, H:18,5 mm, B:8,8 mm, S:4,8 mm 18 kt **599,-**
- 3 | **2O604R** Ohrschmuck RG, 18 Brill. 0,10 ct, TW-si, 2 Topase 6,20 ct London blue, H:23,0 mm, B:8,9 mm, S:5,6 mm 18 kt **1.549,-**
- 4 | **K000659** Zopfketten RG, L:42,0 cm 18 kt **649,-**



- 5 | **1CQ80W** Ring WG, 12 Brill. 0,10 ct, TW-si, 1 Topas 3,10 ct sky blue, H:8,8 mm, B:11,1 mm 18 kt **1.179,-**
- 6 | **3G279W** Anhänger WG, 6 Brill. 0,05 ct, TW-si, 1 Topas 3,10 ct sky blue, H:18,5 mm, B:8,8 mm, S:4,8 mm 18 kt **579,-**
- 7 | **2O603W** Ohrschmuck WG, 18 Brill. 0,10 ct, TW-si, 2 Topase 6,20 ct sky blue, H:23,0 mm, B:8,9 mm, S:5,6 mm 18 kt **1.499,-**
- 8 | **K000657** Zopfketten WG, L:42,0 cm 18 kt **649,-**



- 9 | **1CQ91R** Ring RG, 12 Brill. 0,10 ct, TW-si, 1 Amethyst 2,30 ct grün, H:8,8 mm, B:11,1 mm 18 kt **1.129,-**
- 10 | **3G284R** Anhänger RG, 6 Brill. 0,05 ct, TW-si, 1 Amethyst 2,30 ct grün, H:18,5 mm, B:8,8 mm, S:4,8 mm 18 kt **499,-**
- 11 | **2O609R** Ohrschmuck RG, 18 Brill. 0,10 ct, TW-si, 2 Amethyste 4,60 ct grün, H:23,0 mm, B:8,9 mm, S:5,6 mm 18 kt **1.429,-**
- 12 | **K000659** Zopfketten RG, L:42,0 cm 18 kt **649,-**



- 1 | **20203R** Ohrschmuck RG, 76 Brill. 0,30 ct, TW-si, 2 Topase 8,00 ct London blue, H:25,8 mm, B:11,0 mm, S:5,8 mm 18 kt **2.599,-**
- 2 | **4J780R** Collier RG, 28 Brill. 0,10 ct, TW-si, 1 Topas 3,90 ct London blue, H:13,5 mm, B:11,2 mm, L:42,0 cm, S:5,6 mm 18 kt **1.549,-**
- 3 | **1CJ85R** Ring RG, 43 Brill. 0,15 ct, TW-si, 1 Topas 5,20 ct London blue, H:12,1 mm, B:14,1 mm 18 kt **1.929,-**



- 4 | **20202W** Ohrschmuck WG, 76 Brill. 0,30 ct, TW-si, 2 Topase 8,60 ct sky blue, H:25,8 mm, B:11,1 mm, S:5,8 mm 18 kt **2.599,-**
- 5 | **4J779W** Collier WG, 28 Brill. 0,10 ct, TW-si, 1 Topas 3,90 ct sky blue, H:13,5 mm, B:11,2 mm, L:42,0 cm, S:5,6 mm 18 kt **1.549,-**
- 6 | **1CJ82W** Ring WG, 43 Brill. 0,15 ct, TW-si, 1 Topas 5,20 ct sky blue, H:12,1 mm, B:14,1 mm 18 kt **1.899,-**



- 7 | **20204R** Ohrschmuck RG, 76 Brill. 0,30 ct, TW-si, 2 Amethyste 6,10 ct, H:25,8 mm, B:11,1 mm, S:5,8 mm 18 kt **2.449,-**
- 8 | **4J781R** Collier RG, 28 Brill. 0,10 ct, TW-si, 1 Amethyst 2,90 ct, H:13,5 mm, B:11,2 mm, L:42,0 cm, S:5,6 mm 18 kt **1.479,-**
- 9 | **1S117R** Ring RG, 43 Brill. 0,15 ct, TW-si, 1 Amethyst 3,80 ct, H:12,1 mm, B:14,1 mm 18 kt **1.749,-**



- 1 | **1DB71R** Ring RG, 8 Dia. 0,02 ct, TW-si, 1 Morganit 0,25 ct, H:3,8 mm, B:5,4 mm 18 kt **649,-**
 2 | **1DC36W** Ring WG, 8 Dia. 0,02 ct, TW-si, 1 Topas 0,35 ct, H:3,8 mm, B:5,4 mm 18 kt **549,-**
 3 | **1DD24G** Ring GG, 8 Dia. 0,02 ct, TW-si, 1 Citrin 0,25 ct, H:3,8 mm, B:5,4 mm 18 kt **579,-**
 4 | **1DD23G** Ring GG, 8 Dia. 0,02 ct, TW-si, 1 Amethyst 0,30 ct grün, H:3,8 mm, B:5,4 mm 18 kt **579,-**



- 5 | **1DB89R** Ring RG, 2 Brill. 0,04 ct, TW-si, 1 Amethyst 2,40 ct grün, H:10,9 mm, B:9,8 mm 18 kt **949,-**
 6 | **1DC73W** Ring WG, 2 Brill. 0,04 ct, TW-si, 1 Topas 2,40 ct, H:10,9 mm, B:9,8 mm 18 kt **1.099,-**
 7 | **1DB90R** Ring RG, 2 Brill. 0,04 ct, TW-si, 1 Morganit 2,10 ct, H:10,9 mm, B:9,8 mm 18 kt **1.599,-**
 8 | **1DC74W** Ring WG, 2 Brill. 0,04 ct, TW-si, 1 Topas 3,00 ct London blue, H:10,9 mm, B:9,8 mm 18 kt **1.179,-**
 9 | **1DD50G** Ring GG, 2 Brill. 0,04 ct, TW-si, 1 Citrin 2,40 ct, H:10,9 mm, B:9,8 mm 18 kt **1.129,-**



- 10 | **1DB74R** Ring RG, 6 Brill. 0,10 ct, TW-si, 1 Morganit 0,90 ct, H:12,0 mm, B:7,8 mm 18 kt **1.249,-**
 11 | **1DC44W** Ring WG, 6 Brill. 0,10 ct, TW-si, 1 Topas 0,90 ct London blue, H:12,0 mm, B:7,8 mm 18 kt **1.129,-**
 12 | **1DD28G** Ring GG, 6 Brill. 0,10 ct, TW-si, 1 Citrin 0,90 ct, H:12,0 mm, B:7,8 mm 18 kt **1.099,-**



- 1 | **20131W** Ohrschmuck WG, 52 Brill. 0,15 ct, TW-si, 2 Topase 1,30 ct London blue, H:24,5 mm, B:6,0 mm, S:3,6 mm 18 kt **1.249,-**
- 2 | **4J743W** Collier WG, 20 Brill. 0,08 ct, TW-si, 1 Topas 1,20 ct London blue, H:8,9 mm, B:7,0 mm, L:46,0 cm, S:5,1 mm 18 kt **1.049,-**
- 3 | **1CI31W** Ring WG, 34 Brill. 0,10 ct, TW-si, 1 Topas 1,10 ct London blue, H:7,0 mm, B:8,4 mm 18 kt **1.229,-**



- 4 | **20134W** Ohrschmuck WG, 52 Brill. 0,15 ct, TW-si, 2 Topase 1,40 ct sky blue, H:24,5 mm, B:6,0 mm, S:3,6 mm 18 kt **1.229,-**
- 5 | **4J746W** Collier WG, 20 Brill. 0,08 ct, TW-si, 1 Topas 1,30 ct sky blue, H:8,9 mm, B:7,0 mm, L:46,0 cm, S:5,1 mm 18 kt **999,-**
- 6 | **1CI40W** Ring WG, 34 Brill. 0,10 ct, TW-si, 1 Topas 1,25 ct sky blue, H:7,0 mm, B:8,4 mm 18 kt **1.179,-**



- 7 | **20135R** Ohrschmuck RG, 52 Brill. 0,15 ct, TW-si, 2 Morganite 1,00 ct, H:24,5 mm, B:6,0 mm, S:3,6 mm 18 kt **1.429,-**
- 8 | **4J747R** Collier RG, 20 Brill. 0,08 ct, TW-si, 1 Morganit 0,95 ct, H:8,9 mm, B:7,0 mm, L:46,0 cm, S:5,1 mm 18 kt **1.179,-**
- 9 | **1CI45R** Ring RG, 34 Brill. 0,10 ct, TW-si, 1 Morganit 0,90 ct, H:7,0 mm, B:8,4 mm 18 kt **1.379,-**



- 1 | **10695R** Ring RG, 10 Brill. 0,25 ct, TW-si, 1 Topas 8,20 ct London blue, H:10,7 mm, B:14,4 mm 18 kt **2.099,-**
- 2 | **3F813R** Anhänger RG, 4 Brill. 0,10 ct, TW-si, 1 Topas 8,20 ct London blue, H:21,5 mm, B:10,1 mm, S:7,7 mm 18 kt **1.249,-**
- 3 | **2N847R** Ohrschmuck RG, 12 Brill. 0,25 ct, TW-si, 2 Topase 11,20 ct London blue, H:23,5 mm, B:9,0 mm, S:6,4 mm 18 kt **2.379,-**
- 4 | **K000662** Ankerkette RG, L:42,0 cm 18 kt **469,-**



- 5 | **1U432R** Ring RG, 10 Brill. 0,25 ct, TW-si, 1 Amethyst 6,80 ct grün, H:10,7 mm, B:14,4 mm 18 kt **1.949,-**
- 6 | **3F831R** Anhänger RG, 4 Brill. 0,10 ct, TW-si, 1 Amethyst 6,80 ct grün, H:21,5 mm, B:10,1 mm, S:7,7 mm 18 kt **1.099,-**
- 7 | **2N855R** Ohrschmuck RG, 12 Brill. 0,25 ct, TW-si, 2 Amethyste 7,90 ct grün, H:23,5 mm, B:9,0 mm, S:5,4 mm 18 kt **2.129,-**
- 8 | **K000662** Ankerkette RG, L:42,0 cm 18 kt **469,-**



- 9 | **1CD96R** Ring RG, 10 Brill. 0,25 ct, TW-si, 1 Morganit 7,10 ct, H:10,7 mm, B:14,4 mm 18 kt **4.949,-**
- 10 | **3F832R** Anhänger RG, 4 Brill. 0,10 ct, TW-si, 1 Morganit 7,10 ct, H:21,5 mm, B:10,1 mm, S:7,7 mm 18 kt **4.229,-**
- 11 | **2N864R** Ohrschmuck RG, 12 Brill. 0,25 ct, TW-si, 2 Morganite 8,50 ct, H:23,5 mm, B:9,0 mm, S:6,4 mm 18 kt **5.879,-**
- 12 | **K000662** Ankerkette RG, L:42,0 cm 18 kt **469,-**



- 1 | **20272R** Ohrschmuck RG, 18 Brill. 0,10 ct, TW-si, 2 Morganite 3,00 ct, H:21,5 mm, B:6,9 mm, S:4,2 mm 18 kt **2.399,-**
- 2 | **3G195R** Anhänger RG, 6 Brill. 0,03 ct, TW-si, 1 Morganit 2,00 ct, H:17,2 mm, B:7,8 mm, S:4,8 mm 18 kt **1.249,-**
- 3 | **1CK87R** Ring RG, 12 Brill. 0,05 ct, TW-si, 1 Morganit 2,00 ct, H:7,8 mm, B:9,8 mm 18 kt **1.799,-**
- 4 | **K000662** Ankerkette RG, L:42,0 cm 18 kt **469,-**



- 5 | **20264G** Ohrschmuck GG, 18 Brill. 0,10 ct, TW-si, 2 Citrine 2,90 ct, H:21,5 mm, B:6,9 mm, S:4,2 mm 18 kt **1.379,-**
- 6 | **3G191G** Anhänger GG, 6 Brill. 0,03 ct, TW-si, 1 Citrin 2,20 ct, H:17,2 mm, B:7,8 mm, S:4,8 mm 18 kt **549,-**
- 7 | **1CK75G** Ring GG, 12 Brill. 0,05 ct, TW-si, 1 Citrin 2,20 ct, H:7,8 mm, B:9,8 mm 18 kt **1.079,-**
- 8 | **K000661** Ankerkette GG, L:42,0 cm 18 kt **469,-**



- 9 | **20273G** Ohrschmuck GG, 18 Brill. 0,10 ct, TW-si, 2 Peridot 2,90 ct, H:21,5 mm, B:6,9 mm, S:4,2 mm 18 kt **1.479,-**
- 10 | **3G194G** Anhänger GG, 6 Brill. 0,03 ct, TW-si, 1 Peridot 2,20 ct, H:17,2 mm, B:7,8 mm, S:4,8 mm 18 kt **679,-**
- 11 | **1CK88G** Ring GG, 12 Brill. 0,05 ct, TW-si, 1 Peridot 2,20 ct, H:7,8 mm, B:9,8 mm 18 kt **1.199,-**
- 12 | **K000661** Ankerkette GG, L:42,0 cm 18 kt **469,-**



- 1 | **1CQ54W** Ring WG, 12 Brill. 0,10 ct, TW-si, 1 Topas 4,00 ct sky blue, H:9,3 mm, B:11,0 mm 18 kt **1.299,-**
 2 | **3G264W** Anhänger WG, 5 Brill. 0,05 ct, TW-si, 1 Topas 4,00 ct sky blue, H:18,8 mm, B:8,8 mm, S:4,4 mm 18 kt **679,-**
 3 | **2O583W** Ohrschmuck WG, 16 Brill. 0,10 ct, TW-si, 2 Topase 8,40 ct sky blue, H:24,8 mm, B:9,1 mm, S:4,5 mm 18 kt **1.679,-**
 4 | **K000660** Ankerkette WG, L:42,0 cm 18 kt **469,-**



- 5 | **1CQ59R** Ring RG, 12 Brill. 0,10 ct, TW-si, 1 Amethyst 3,00 ct grün, H:9,3 mm, B:11,0 mm 18 kt **1.249,-**
 6 | **3G269R** Anhänger RG, 5 Brill. 0,05 ct, TW-si, 1 Amethyst 3,00 ct grün, H:18,8 mm, B:8,8 mm, S:4,4 mm 18 kt **649,-**
 7 | **2O588R** Ohrschmuck RG, 16 Brill. 0,10 ct, TW-si, 2 Amethyste 6,00 ct grün, H:24,8 mm, B:9,1 mm, S:4,5 mm 18 kt **1.579,-**
 8 | **K000662** Ankerkette RG, L:42,0 cm 18 kt **469,-**



- 9 | **1CQ57G** Ring GG, 12 Brill. 0,10 ct, TW-si, 1 Citrin 3,00 ct, H:9,3 mm, B:11,0 mm 18 kt **1.249,-**
 10 | **3G267G** Anhänger GG, 5 Brill. 0,05 ct, TW-si, 1 Citrin 3,00 ct, H:18,8 mm, B:8,8 mm, S:4,4 mm 18 kt **699,-**
 11 | **2O586G** Ohrschmuck GG, 16 Brill. 0,10 ct, TW-si, 2 Citrine 6,00 ct, H:24,8 mm, B:9,1 mm, S:4,5 mm 18 kt **1.579,-**
 12 | **K000661** Ankerkette GG, L:42,0 cm 18 kt **469,-**



- 1 | **20181R** Ohrschmuck RG, 92 Brill. 0,30 ct, TW-si, 2 Topase 11,00 ct London blue, H:24,7 mm, B:10,8 mm, S:5,6 mm 18 kt **2.849,-**
- 2 | **3G116R** Anhänger RG, 44 Brill. 0,15 ct, TW-si, 1 Topas 8,30 ct London blue, H:24,5 mm, B:11,8 mm, S:6,3 mm 18 kt **1.629,-**
- 3 | **1CJ64R** Ring RG, 50 Brill. 0,20 ct, TW-si, 1 Topas 8,30 ct London blue, H:12,2 mm, B:15,9 mm 18 kt **2.299,-**
- 4 | **K000662** Ankerkette RG, L:42,0 cm 18 kt **469,-**



- 5 | **20180W** Ohrschmuck WG, 92 Brill. 0,30 ct, TW-si, 2 Topase 8,70 ct sky blue, H:24,7 mm, B:10,8 mm, S:5,6 mm 18 kt **2.749,-**
- 6 | **3G115W** Anhänger WG, 44 Brill. 0,15 ct, TW-si, 1 Topas 7,60 ct sky blue, H:24,5 mm, B:11,8 mm, S:6,3 mm 18 kt **1.579,-**
- 7 | **1CJ61W** Ring WG, 50 Brill. 0,20 ct, TW-si, 1 Topas 7,60 ct sky blue, H:12,2 mm, B:15,9 mm 18 kt **2.249,-**
- 8 | **K000660** Ankerkette WG, L:42,0 cm 18 kt **469,-**



- 9 | **20182R** Ohrschmuck RG, 92 Brill. 0,30 ct, TW-si, 2 Amethyste 7,60 ct, H:24,7 mm, B:10,8 mm, S:5,6 mm 18 kt **2.649,-**
- 10 | **3G117R** Anhänger RG, 44 Brill. 0,15 ct, TW-si, 1 Amethyst 6,50 ct, H:24,5 mm, B:11,8 mm, S:6,3 mm 18 kt **1.429,-**
- 11 | **1CJ67R** Ring RG, 50 Brill. 0,20 ct, TW-si, 1 Amethyst 6,50 ct, H:12,2 mm, B:15,9 mm 18 kt **2.129,-**
- 12 | **K000662** Ankerkette RG, L:42,0 cm 18 kt **469,-**



- 1 | **1CJ39R** Ring RG, 66 Brill. 0,25 ct, TW-si, 1 Morganit 3,00 ct, H:10,1 mm, B:12,0 mm 18 kt **2.999,-**
- 2 | **3G105R** Anhänger RG, 44 Brill. 0,20 ct, TW-si, 1 Morganit 3,00 ct, H:19,0 mm, B:10,3 mm, S:5,5 mm 18 kt **2.429,-**
- 3 | **20171R** Ohrschmuck RG, 92 Brill. 0,35 ct, TW-si, 2 Morganite 4,20 ct, H:24,0 mm, B:9,2 mm, S:4,7 mm 18 kt **3.879,-**
- 4 | **K000662** Ankerkette RG, L:42,0 cm 18 kt **469,-**



- 5 | **1CH64G** Ring GG, 66 Brill. 0,25 ct, TW-si, 1 Citrin 3,00 ct, H:10,1 mm, B:12,0 mm 18 kt **1.849,-**
- 6 | **3G082G** Anhänger GG, 44 Brill. 0,20 ct, TW-si, 1 Citrin 3,00 ct, H:19,0 mm, B:10,3 mm, S:5,5 mm 18 kt **1.199,-**
- 7 | **20075G** Ohrschmuck GG, 92 Brill. 0,35 ct, TW-si, 2 Citrine 4,20 ct, H:24,0 mm, B:9,2 mm, S:4,7 mm 18 kt **2.399,-**
- 8 | **K000661** Ankerkette GG, L:42,0 cm 18 kt **469,-**



- 9 | **1CJ40G** Ring GG, 66 Brill. 0,25 ct, TW-si, 1 Peridot 3,30 ct, H:10,1 mm, B:12,0 mm 18 kt **2.249,-**
- 10 | **3G107G** Anhänger GG, 44 Brill. 0,20 ct, TW-si, 1 Peridot 3,30 ct, H:19,0 mm, B:10,3 mm, S:5,5 mm 18 kt **1.299,-**
- 11 | **20172G** Ohrschmuck GG, 92 Brill. 0,35 ct, TW-si, 2 Peridot 4,50 ct, H:24,0 mm, B:9,2 mm, S:4,7 mm 18 kt **2.579,-**
- 12 | **K000661** Ankerkette GG, L:42,0 cm 18 kt **469,-**



- 1 | **2N857R** Ohrschmuck RG, 64 Brill. 0,25 ct, TW-si, 2 Topase 8,60 ct London blue, H:25,0 mm, B:10,0 mm, S:5,6 mm 18 kt **2.499,-**
- 2 | **3F821R** Anhänger RG, 29 Brill. 0,15 ct, TW-si, 1 Topas 3,90 ct London blue, H:20,0 mm, B:10,4 mm, S:5,0 mm 18 kt **1.129,-**
- 3 | **1CD88R** Ring RG, 36 Brill. 0,15 ct, TW-si, 1 Topas 3,90 ct London blue, H:10,0 mm, B:12,0 mm 18 kt **1.729,-**
- 4 | **K000662** Ankerkette RG, L:42,0 cm 18 kt **469,-**



- 5 | **2N856W** Ohrschmuck WG, 64 Brill. 0,25 ct, TW-si, 2 Topase 8,60 ct sky blue, H:25,0 mm, B:10,0 mm, S:5,6 mm 18 kt **2.479,-**
- 6 | **3F823W** Anhänger WG, 29 Brill. 0,15 ct, TW-si, 1 Topas 3,90 ct sky blue, H:20,0 mm, B:10,4 mm, S:5,0 mm 18 kt **1.099,-**
- 7 | **1CD84W** Ring WG, 36 Brill. 0,15 ct, TW-si, 1 Topas 3,90 ct sky blue, H:10,0 mm, B:12,0 mm 18 kt **1.699,-**
- 8 | **K000660** Ankerkette WG, L:42,0 cm 18 kt **469,-**



- 9 | **2N861R** Ohrschmuck RG, 64 Brill. 0,25 ct, TW-si, 2 Amethyste 6,50 ct grün, H:25,0 mm, B:10,0 mm, S:5,6 mm 18 kt **2.379,-**
- 10 | **3F827R** Anhänger RG, 29 Brill. 0,15 ct, TW-si, 1 Amethyst 3,00 ct grün, H:20,0 mm, B:10,4 mm, S:5,0 mm 18 kt **1.049,-**
- 11 | **1CD92R** Ring RG, 36 Brill. 0,15 ct, TW-si, 1 Amethyst 3,00 ct grün, H:10,0 mm, B:12,0 mm 18 kt **1.649,-**
- 12 | **K000662** Ankerkette RG, L:42,0 cm 18 kt **469,-**



- 1 | **1CE37G** Ring GG, 1 Peridot 3,50 ct, 6 Peridot 0,90 ct, H:9,2 mm, B:9,2 mm 18 kt **1.649,-**
 2 | **3F866G** Anhänger GG, 1 Peridot 3,50 ct, 3 Peridot 0,30 ct, H:20,1 mm, B:9,0 mm, S:6,0 mm 18 kt **1.199,-**
 3 | **2N905G** Ohrschmuck GG, 2 Peridot 4,90 ct, 8 Peridot 0,90 ct, H:20,0 mm, B:8,0 mm, S:5,0 mm 18 kt **1.979,-**
 4 | **K000661** Ankerkette GG, L:42,0 cm 18 kt **469,-**



- 5 | **1CE31G** Ring GG, 1 Citrin 3,40 ct, 6 Citrine 0,60 ct, H:9,2 mm, B:9,2 mm 18 kt **999,-**
 6 | **3F863G** Anhänger GG, 1 Citrin 3,40 ct, 3 Citrine 0,30 ct, H:20,1 mm, B:9,0 mm, S:6,7 mm 18 kt **599,-**
 7 | **2N901G** Ohrschmuck GG, 2 Citrine 4,50 ct, 8 Citrine 0,90 ct, H:20,0 mm, B:8,0 mm, S:5,0 mm 18 kt **1.199,-**
 8 | **K000661** Ankerkette GG, L:42,0 cm 18 kt **469,-**



- 9 | **1CE28W** Ring WG, 1 Topas 4,50 ct sky blue, 6 Topase 1,10 ct sky blue, H:9,2 mm, B:9,2 mm 18 kt **1.099,-**
 10 | **3F860W** Anhänger WG, 1 Topas 4,50 ct sky blue, 3 Topase 0,50 ct sky blue, H:20,1 mm, B:9,0 mm, S:6,7 mm 18 kt **679,-**
 11 | **2N897W** Ohrschmuck WG, 2 Topase 6,40 ct sky blue, 8 Topase 1,10 ct sky blue, H:20,0 mm, B:8,0 mm, S:5,0 mm 18 kt **1.349,-**
 12 | **K000660** Ankerkette WG, L:42,0 cm 18 kt **469,-**



- 1 | **2P279R** Ohrstecker RG, 10 Brill. 0,25 ct, TW-si, 2 Topase 9,20 ct London blue, H:21,7 mm, B:11,4 mm, S:6,4 mm 18 kt **2.829,-**
- 2 | **3G504R** Anhänger RG, 4 Brill. 0,10 ct, TW-si, 1 Topas 6,00 ct London blue, H:21,5 mm, B:12,8 mm, S:6,7 mm 18 kt **1.579,-**
- 3 | **1DD84R** Ring RG, 10 Brill. 0,25 ct, TW-si, 1 Topas 6,00 ct London blue, H:13,0 mm, B:13,0 mm 18 kt **2.349,-**
- 4 | **K000659** Zopfketten RG, L:42,0 cm 18 kt **649,-**



- 5 | **2P278W** Ohrstecker WG, 10 Brill. 0,25 ct, TW-si, 2 Topase 9,20 ct Swiss blue, H:21,7 mm, B:11,4 mm, S:6,4 mm 18 kt **2.729,-**
- 6 | **3G503W** Anhänger WG, 4 Brill. 0,10 ct, TW-si, 1 Topas 6,00 ct Swiss blue, H:21,5 mm, B:12,8 mm, S:6,7 mm 18 kt **1.479,-**
- 7 | **1DD81W** Ring WG, 10 Brill. 0,25 ct, TW-si, 1 Topas 6,00 ct Swiss blue, H:13,0 mm, B:13,0 mm 18 kt **2.199,-**
- 8 | **K000657** Zopfketten WG, L:42,0 cm 18 kt **649,-**



- 9 | **20707R** Ohrstecker RG, 10 Brill. 0,25 ct, TW-si, 2 Amethyste 9,20 ct grün, H:21,7 mm, B:11,4 mm, S:6,4 mm 18 kt **2.499,-**
- 10 | **3G341R** Anhänger RG, 4 Brill. 0,10 ct, TW-si, 1 Amethyst 6,00 ct grün, H:21,5 mm, B:12,8 mm, S:6,7 mm 18 kt **1.249,-**
- 11 | **1CS89R** Ring RG, 10 Brill. 0,25 ct, TW-si, 1 Amethyst 6,00 ct grün, H:13,0 mm, B:13,0 mm 18 kt **2.049,-**
- 12 | **K000659** Zopfketten RG, L:42,0 cm 18 kt **649,-**



- 1 | **1CF93W** Ring WG, 6 Brill. 0,08 ct, TW-si, 1 Amethyst 1,35 ct grün, H:7,0 mm, B:7,0 mm 18 kt **929,-**
 2 | **4J546W** Collier WG, 5 Brill. 0,02 ct, TW-si, 1 Amethyst 2,13 ct grün, H:15,5 mm, B:7,7 mm, L:45,0 cm, S:5,2 mm 18 kt **1.049,-**
 3 | **2N080W** Ohrschmuck WG, 16 Brill. 0,05 ct, TW-si, 2 Amethyste 1,80 ct grün, H:19,0 mm, B:5,8 mm, S:4,3 mm 18 kt **1.049,-**



- 4 | **1CC71W** Ring WG, 6 Brill. 0,08 ct, TW-si, 1 Topas 1,95 ct sky blue, H:7,0 mm, B:7,0 mm 18 kt **929,-**
 5 | **4J545W** Collier WG, 5 Brill. 0,02 ct, TW-si, 1 Topas 2,95 ct sky blue, H:15,5 mm, B:7,7 mm, L:45,0 cm, S:5,2 mm 18 kt **1.049,-**
 6 | **2N070W** Ohrschmuck WG, 16 Brill. 0,05 ct, TW-si, 2 Topase 2,55 ct sky blue, H:19,0 mm, B:5,8 mm, S:4,3 mm 18 kt **1.049,-**



- 7 | **1CC71W** Ring WG, 6 Brill. 0,08 ct, TW-si, 1 Topas 1,95 ct sky blue, H:7,0 mm, B:7,0 mm 18 kt **929,-**
 8 | **1CC73W** Ring WG, 6 Brill. 0,08 ct, TW-si, 1 Topas 1,45 ct London blue, H:7,0 mm, B:7,0 mm 18 kt **949,-**
 9 | **1CF93W** Ring WG, 6 Brill. 0,08 ct, TW-si, 1 Amethyst 1,35 ct grün, H:7,0 mm, B:7,0 mm 18 kt **929,-**
 10 | **1CC69G** Ring GG, 6 Brill. 0,08 ct, TW-si, 1 Citrin 1,30 ct, H:7,0 mm, B:7,0 mm 18 kt **879,-**
 11 | **1CC72G** Ring GG, 6 Brill. 0,08 ct, TW-si, 1 Amethyst 1,30 ct, H:7,0 mm, B:7,0 mm 18 kt **879,-**



- 1 | **20626R** Ohrstecker RG, 12 Brill. 0,25 ct, TW-si, 2 Topase 9,90 ct London blue, H:21,4 mm, B:10,0 mm, S:6,1 mm 18 kt **2.179,-**
- 2 | **3G301R** Anhänger RG, 5 Brill. 0,10 ct, TW-si, 1 Topas 8,60 ct London blue, H:20,2 mm, B:12,0 mm, S:6,9 mm 18 kt **1.249,-**
- 3 | **1CR08R** Ring RG, 8 Brill. 0,15 ct, TW-si, 1 Topas 8,60 ct London blue, H:12,0 mm, B:12,0 mm 18 kt **1.879,-**
- 4 | **K000659** Zopfketten RG, L:42,0 cm 18 kt **649,-**



- 5 | **20627R** Ohrstecker RG, 12 Brill. 0,25 ct, TW-si, 2 Amethyste 7,30 ct, H:21,4 mm, B:10,0 mm, S:6,1 mm 18 kt **1.999,-**
- 6 | **3G302R** Anhänger RG, 5 Brill. 0,10 ct, TW-si, 1 Amethyst 6,00 ct, H:20,2 mm, B:12,0 mm, S:6,9 mm 18 kt **999,-**
- 7 | **1S095R** Ring RG, 8 Brill. 0,15 ct, TW-si, 1 Amethyst 6,00 ct, H:12,0 mm, B:12,0 mm 18 kt **1.629,-**
- 8 | **K000659** Zopfketten RG, L:42,0 cm 18 kt **649,-**



- 9 | **20629G** Ohrstecker GG, 12 Brill. 0,25 ct, TW-si, 2 Citrine 7,30 ct, H:21,4 mm, B:10,0 mm, S:6,1 mm 18 kt **2.099,-**
- 10 | **3G304G** Anhänger GG, 5 Brill. 0,10 ct, TW-si, 1 Citrin 6,00 ct, H:20,2 mm, B:12,0 mm, S:6,9 mm 18 kt **1.099,-**
- 11 | **1CR09G** Ring GG, 8 Brill. 0,15 ct, TW-si, 1 Citrin 6,00 ct, H:12,0 mm, B:12,0 mm 18 kt **1.699,-**
- 12 | **K000658** Zopfketten GG, L:42,0 cm 18 kt **649,-**



- 1 | **1CF27W** Ring WG, 34 Brill. 0,20 ct, TW-si, 1 Topas 1,15 ct London blue, H:8,3 mm, B:8,3 mm 18 kt **1.249,-**
 2 | **4J553W** Collier WG, 20 Brill. 0,10 ct, TW-si, 1 Topas 1,15 ct London blue, H:8,3 mm, B:8,3 mm, L:46,0 cm, S:5,4 mm 18 kt **1.079,-**
 3 | **2N959W** Ohrstecker WG, 40 Brill. 0,10 ct, TW-si, 2 Topase 1,35 ct London blue, H:7,0 mm, B:7,0 mm, S:4,0 mm 18 kt **1.049,-**



- 4 | **1CF25W** Ring WG, 34 Brill. 0,20 ct, TW-si, 1 Topas 1,00 ct sky blue, H:8,3 mm, B:8,3 mm 18 kt **1.229,-**
 5 | **4J555W** Collier WG, 20 Brill. 0,10 ct, TW-si, 1 Topas 1,00 ct sky blue, H:8,3 mm, B:8,3 mm, L:46,0 cm, S:5,4 mm 18 kt **1.049,-**
 6 | **2N961W** Ohrstecker WG, 40 Brill. 0,10 ct, TW-si, 2 Topase 1,45 ct sky blue, H:7,0 mm, B:7,0 mm, S:4,0 mm 18 kt **999,-**



- 7 | **1CF28R** Ring RG, 34 Brill. 0,20 ct, TW-si, 1 Morganit 0,90 ct, H:8,3 mm, B:8,3 mm 18 kt **1.479,-**
 8 | **4J556R** Collier RG, 20 Brill. 0,10 ct, TW-si, 1 Morganit 0,90 ct, H:8,3 mm, B:8,3 mm, L:46,0 cm, S:5,4 mm 18 kt **1.299,-**
 9 | **2N962R** Ohrstecker RG, 40 Brill. 0,10 ct, TW-si, 2 Morganite 1,00 ct, H:7,0 mm, B:7,0 mm, S:4,0 mm 18 kt **1.229,-**



- 1 | **2N887G** Ohrstecker GG, 48 Brill. 0,15 ct, TW-si, 2 Peridot 3,60 ct, H:9,1 mm, B:9,1 mm, S:4,1 mm 18 kt **1.799,-**
- 2 | **3F851G** Anhänger GG, 33 Brill. 0,15 ct, TW-si, 1 Peridot 4,30 ct, H:17,5 mm, B:11,2 mm, S:5,9 mm 18 kt **1.749,-**
- 3 | **1CE16G** Ring GG, 40 Brill. 0,20 ct, TW-si, 1 Peridot 4,30 ct, H:11,4 mm, B:11,4 mm 18 kt **2.499,-**
- 4 | **K000658** Zopfketten GG, L:42,0 cm 18 kt **649,-**



- 5 | **2N885R** Ohrstecker RG, 48 Brill. 0,15 ct, TW-si, 2 Amethyste 2,70 ct grün, H:9,1 mm, B:9,1 mm, S:4,1 mm 18 kt **1.679,-**
- 6 | **3F849R** Anhänger RG, 33 Brill. 0,15 ct, TW-si, 1 Amethyst 3,00 ct grün, H:17,5 mm, B:11,2 mm, S:5,9 mm 18 kt **1.099,-**
- 7 | **1CE14R** Ring RG, 40 Brill. 0,20 ct, TW-si, 1 Amethyst 3,00 ct grün, H:11,4 mm, B:11,4 mm 18 kt **1.879,-**
- 8 | **K000662** Ankerkette RG, L:42,0 cm 18 kt **469,-**



- 9 | **2N883G** Ohrstecker GG, 48 Brill. 0,15 ct, TW-si, 2 Citrine 2,80 ct, H:9,1 mm, B:9,1 mm, S:4,1 mm 18 kt **1.679,-**
- 10 | **3F846G** Anhänger GG, 33 Brill. 0,15 ct, TW-si, 1 Citrin 3,30 ct, H:17,5 mm, B:11,2 mm, S:5,9 mm 18 kt **1.099,-**
- 11 | **1CE13G** Ring GG, 40 Brill. 0,20 ct, TW-si, 1 Citrin 3,30 ct, H:11,4 mm, B:11,4 mm 18 kt **1.879,-**
- 12 | **K000661** Ankerkette GG, L:42,0 cm 18 kt **469,-**



- 1 | **1CQ53R** Ring RG, 8 Brill. 0,15 ct, TW-si, 1 Amethyst 6,60 ct grün, H:12,9 mm, B:12,9 mm 18 kt **1.749,-**
 2 | **3G263R** Anhänger RG, 4 Brill. 0,10 ct, TW-si, 1 Amethyst 6,60 ct grün, H:20,8 mm, B:12,7 mm, S:8,9 mm 18 kt **1.049,-**
 3 | **2O582R** Ohrschmuck RG, 14 Brill. 0,20 ct, TW-si, 2 Amethyste 8,60 ct grün, H:22,8 mm, B:10,7 mm, S:6,1 mm 18 kt **1.949,-**
 4 | **K000659** Zopfketten RG, L:42,0 cm 18 kt **649,-**



- 5 | **1CQ51G** Ring GG, 8 Brill. 0,15 ct, TW-si, 1 Citrin 6,30 ct, H:12,9 mm, B:12,9 mm 18 kt **1.749,-**
 6 | **3G261G** Anhänger GG, 4 Brill. 0,10 ct, TW-si, 1 Citrin 6,30 ct, H:20,8 mm, B:12,7 mm, S:8,9 mm 18 kt **1.049,-**
 7 | **2O580G** Ohrschmuck GG, 14 Brill. 0,20 ct, TW-si, 2 Citrine 7,10 ct, H:22,8 mm, B:10,7 mm, S:6,1 mm 18 kt **1.949,-**
 8 | **K000658** Zopfketten GG, L:42,0 cm 18 kt **649,-**



- 9 | **1CQ48W** Ring WG, 8 Brill. 0,15 ct, TW-si, 1 Topas 9,30 ct sky blue, H:12,9 mm, B:12,9 mm 18 kt **1.949,-**
 10 | **3G259W** Anhänger WG, 4 Brill. 0,10 ct, TW-si, 1 Topas 9,30 ct sky blue, H:20,8 mm, B:12,7 mm, S:8,9 mm 18 kt **1.249,-**
 11 | **2O577W** Ohrschmuck WG, 14 Brill. 0,20 ct, TW-si, 2 Topase 11,40 ct sky blue, H:22,8 mm, B:10,7 mm, S:6,1 mm 18 kt **2.099,-**
 12 | **K000657** Zopfketten WG, L:42,0 cm 18 kt **649,-**



- 1 | **20253R** Ohrschmuck RG, 98 Brill. 0,35 ct, TW-si, 2 Morganite 11,50 ct, H:26,1 mm, B:13,2 mm, S:6,9 mm 18 kt **7.949,-**
- 2 | **3G179R** Anhänger RG, 46 Brill. 0,20 ct, TW-si, 1 Morganit 6,40 ct, H:22,9 mm, B:14,7 mm, S:7,6 mm 18 kt **5.129,-**
- 3 | **1CK68R** Ring RG, 40 Brill. 0,15 ct, TW-si, 1 Morganit 6,40 ct, H:14,7 mm, B:14,5 mm 18 kt **5.879,-**
- 4 | **K000662** Ankerkette RG, L:42,0 cm 18 kt **469,-**



- 5 | **20254R** Ohrschmuck RG, 98 Brill. 0,35 ct, TW-si, 2 Amethyste 12,20 ct grün, H:25,5 mm, B:12,0 mm, S:7,7 mm 18 kt **3.579,-**
- 6 | **3G180R** Anhänger RG, 46 Brill. 0,20 ct, TW-si, 1 Amethyst 7,80 ct grün, H:22,9 mm, B:14,7 mm, S:8,9 mm 18 kt **1.599,-**
- 7 | **1CK69R** Ring RG, 40 Brill. 0,15 ct, TW-si, 1 Amethyst 7,80 ct grün, H:14,7 mm, B:14,5 mm 18 kt **1.949,-**
- 8 | **K000662** Ankerkette RG, L:42,0 cm 18 kt **469,-**



- 9 | **20250G** Ohrschmuck GG, 98 Brill. 0,35 ct, TW-si, 2 Citrine 10,90 ct, H:26,2 mm, B:13,3 mm, S:8,0 mm 18 kt **2.879,-**
- 10 | **3G177G** Anhänger GG, 46 Brill. 0,20 ct, TW-si, 1 Citrin 7,40 ct, H:22,9 mm, B:14,7 mm, S:8,9 mm 18 kt **1.499,-**
- 11 | **1CK66G** Ring GG, 40 Brill. 0,15 ct, TW-si, 1 Citrin 7,40 ct gelb, H:14,7 mm, B:14,5 mm 18 kt **1.879,-**
- 12 | **K000661** Ankerkette GG, L:42,0 cm 18 kt **469,-**